

CONDOMINIUM PLAN

SHEET 3 OF 7 SHEETS

BOCA RIO BEACH CONDOMINIUM

STREET

FIRST

4'-06".50
R'-20'
L'-30.31'

N 3° 41' 00" E
163.71'

282.05'

163.00'

163.71'

163.71'

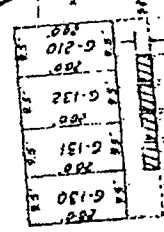
163.71'

163.71'

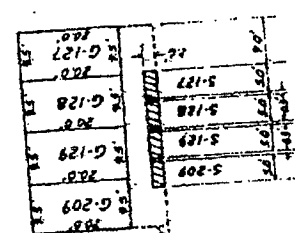
163.71'

163.71'

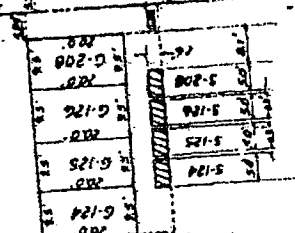
163.71'



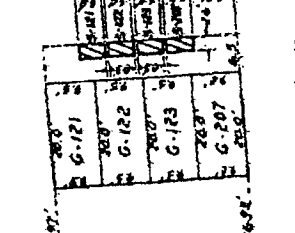
1090



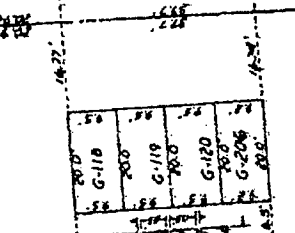
1080



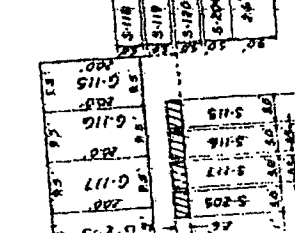
1070



1060



1050



1040

M 00 61' 59" N

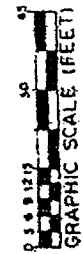
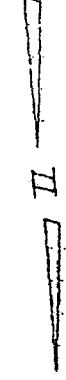
M 00 62' 00" W

M 00 62' 59" W

M 00 23' 00" W

SEE SHEET 2

NO 07517



GARAGE LEVEL PLAN

ROSSMAN & ASSOCIATES
 301 CAMINO DEL RIO SOUTH
 SUITE 404 SAN DIEGO, CA 92108
 PHONE 714-280-7902
 FAX 714-280-7904

CONDOMINIUM PLAN

SHEET 4 OF 7 SHEETS

BOCA RIO BEACH CONDOMINIUM

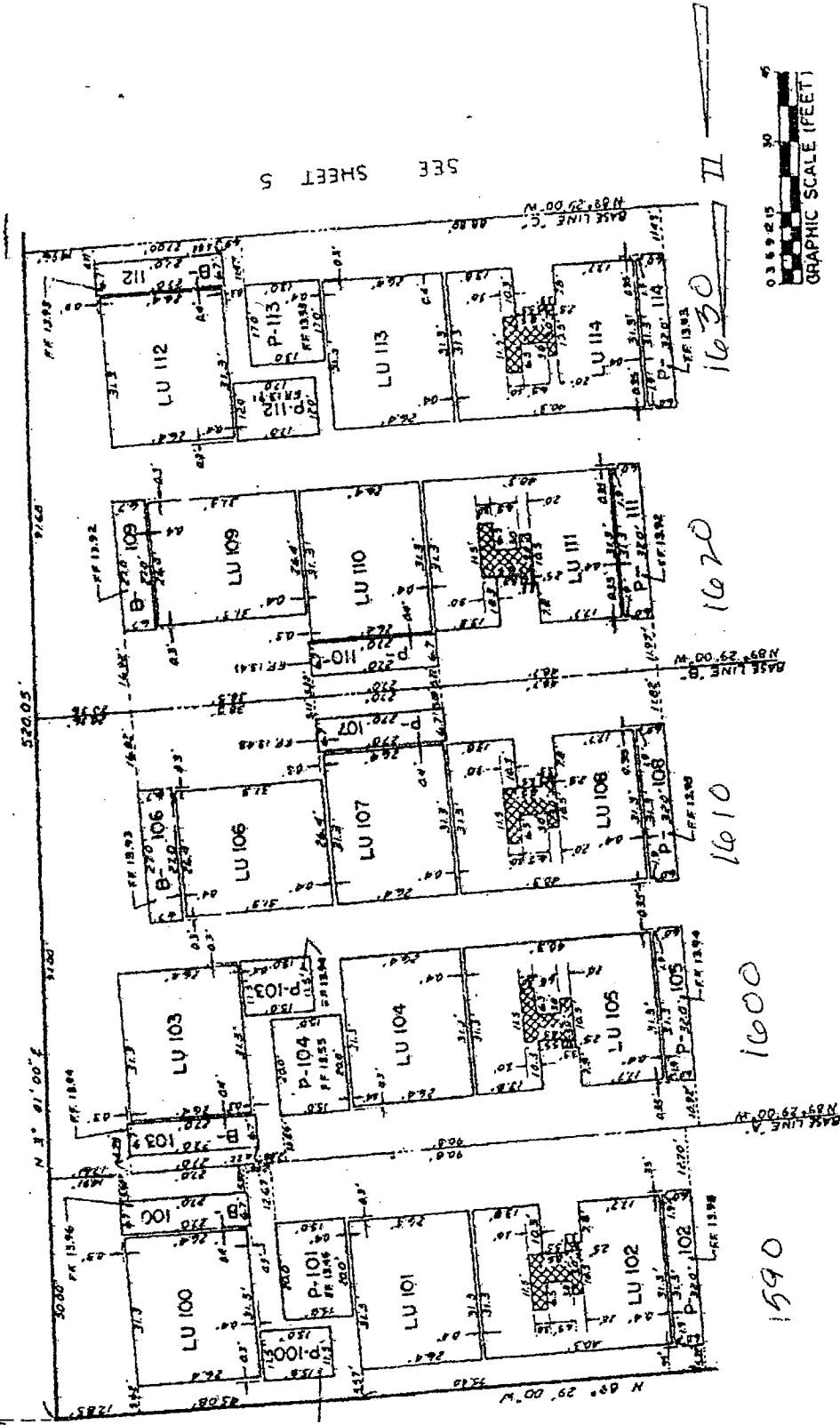
1070

STREET

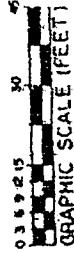
FIRST

175150

P. 09



SEE SHEET 5



FIRST FLOOR PLAN

CROSSMAN & ASSOCIATES
 3511 LAVING DEL RIO SOUTH
 SUITE 424, SAN DIEGO CA, 92108
 PHONE 714-260-7004
 J.T. 501

CEILING DROPPED
 HEIGHT FROM FF TO FC - 6'-0"

1590

1600

1610

1620

1630

May-23-00 09:03A

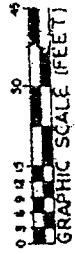
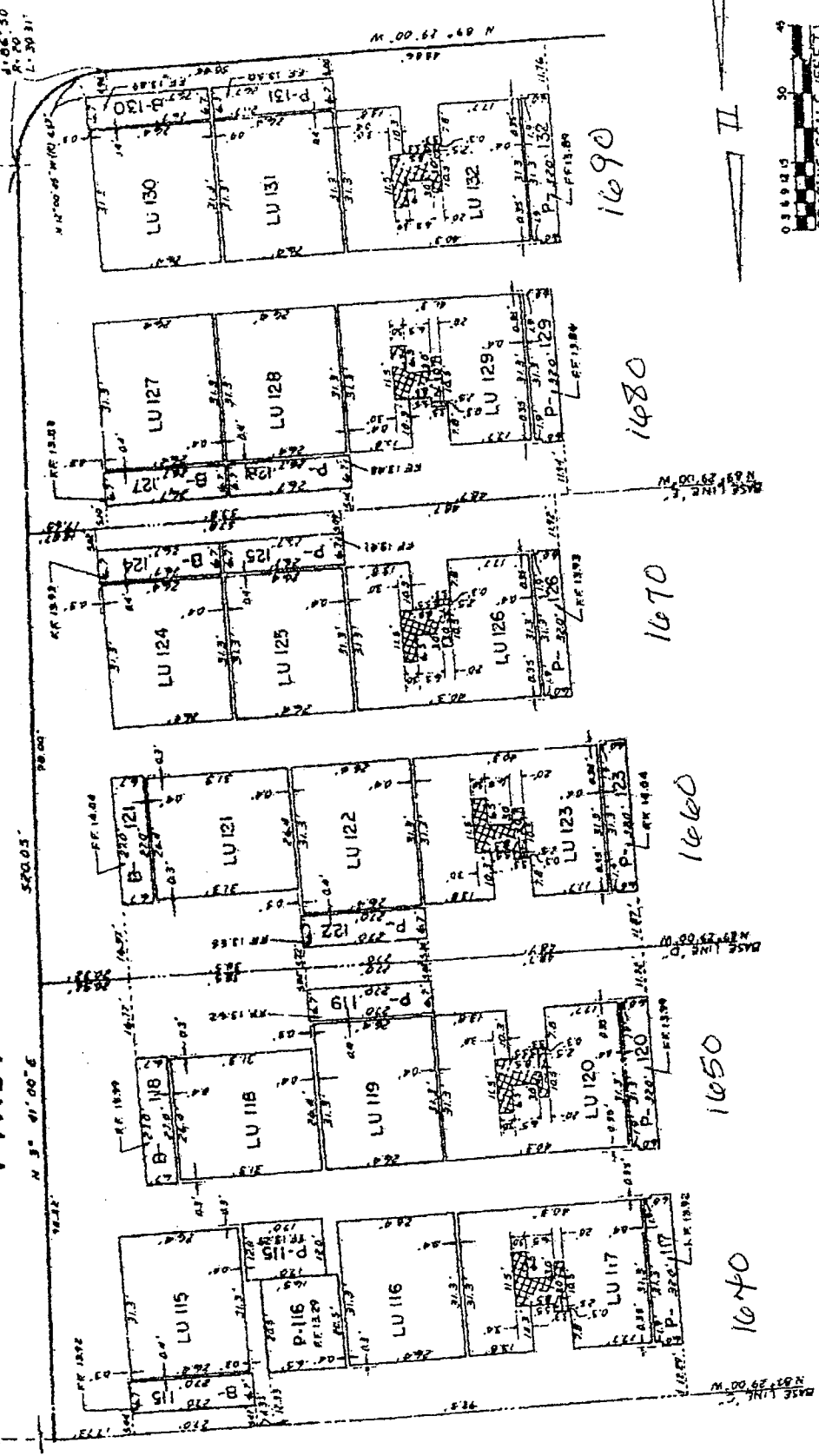
BOCA RIO BEACH CONDOMINIUM

STREET

FIRST

N 02547

SEE SHEET 4



FIRST FLOOR PLAN

CROSSMAN & ASSOCIATES
 3111 CAMINO DEL RIO SOUTH
 SUITE 404, SAN DIEGO, CA 92108
 PHONE 714-260-7000
 FAX 714-260-7008

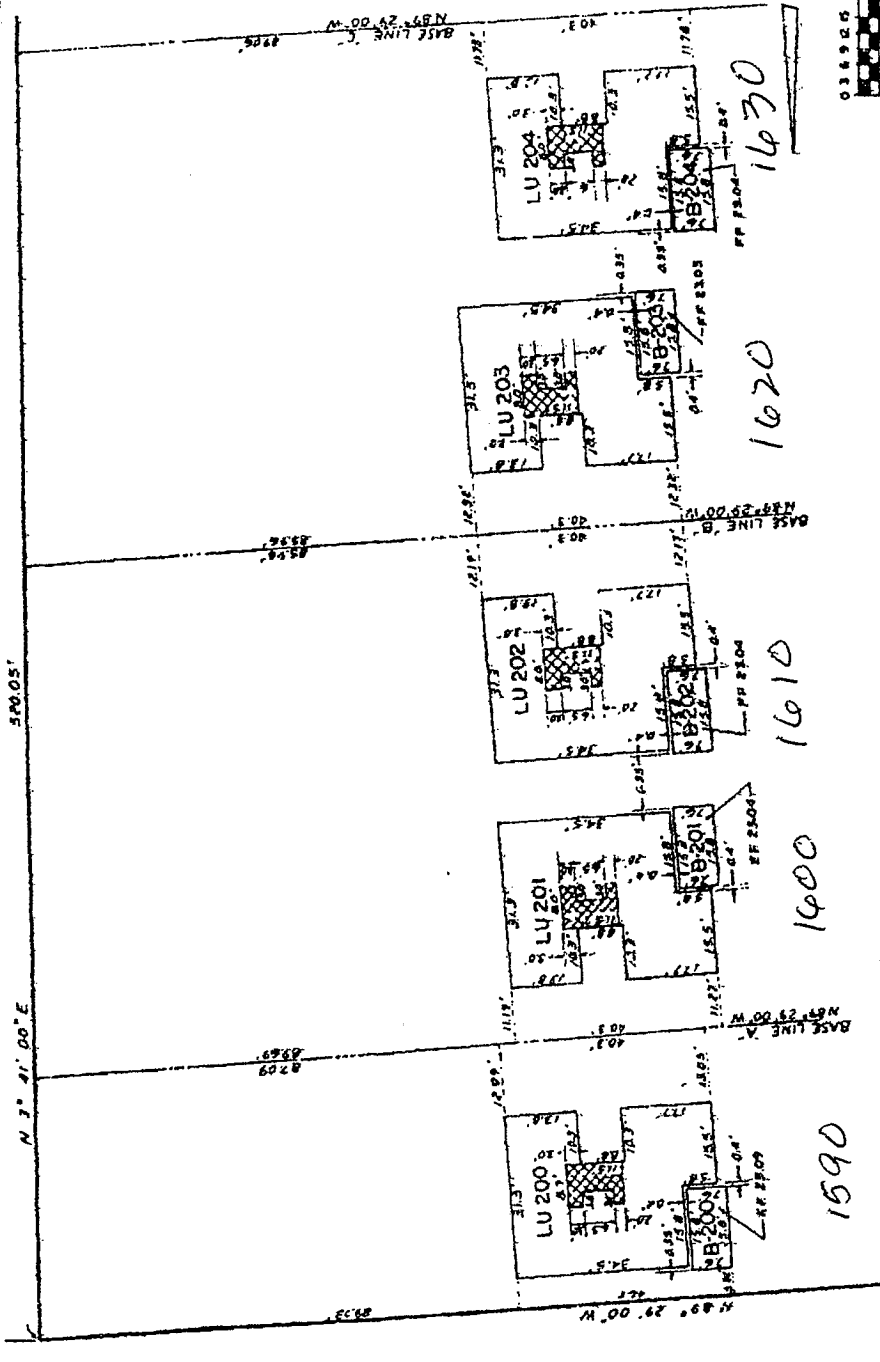
□ REMOTES DROPPED CEILING
 HEIGHT FROM FF TO FC 16.00'

1977 CONDOMINIUM PLAN
BOCA RIO BEACH CONDOMINIUM

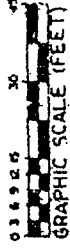
SHEET 6 OF 7 SHEETS

FIRST STREET

FIRST



SEE SHEET 7



SECOND FLOOR PLAN

CROSSMAN & ASSOCIATES
SITE PLANNING, SEE PLS. 300-4118
3001 4th St., Suite 200, Boca Raton, FL 33431
PHONE: 561-992-7004

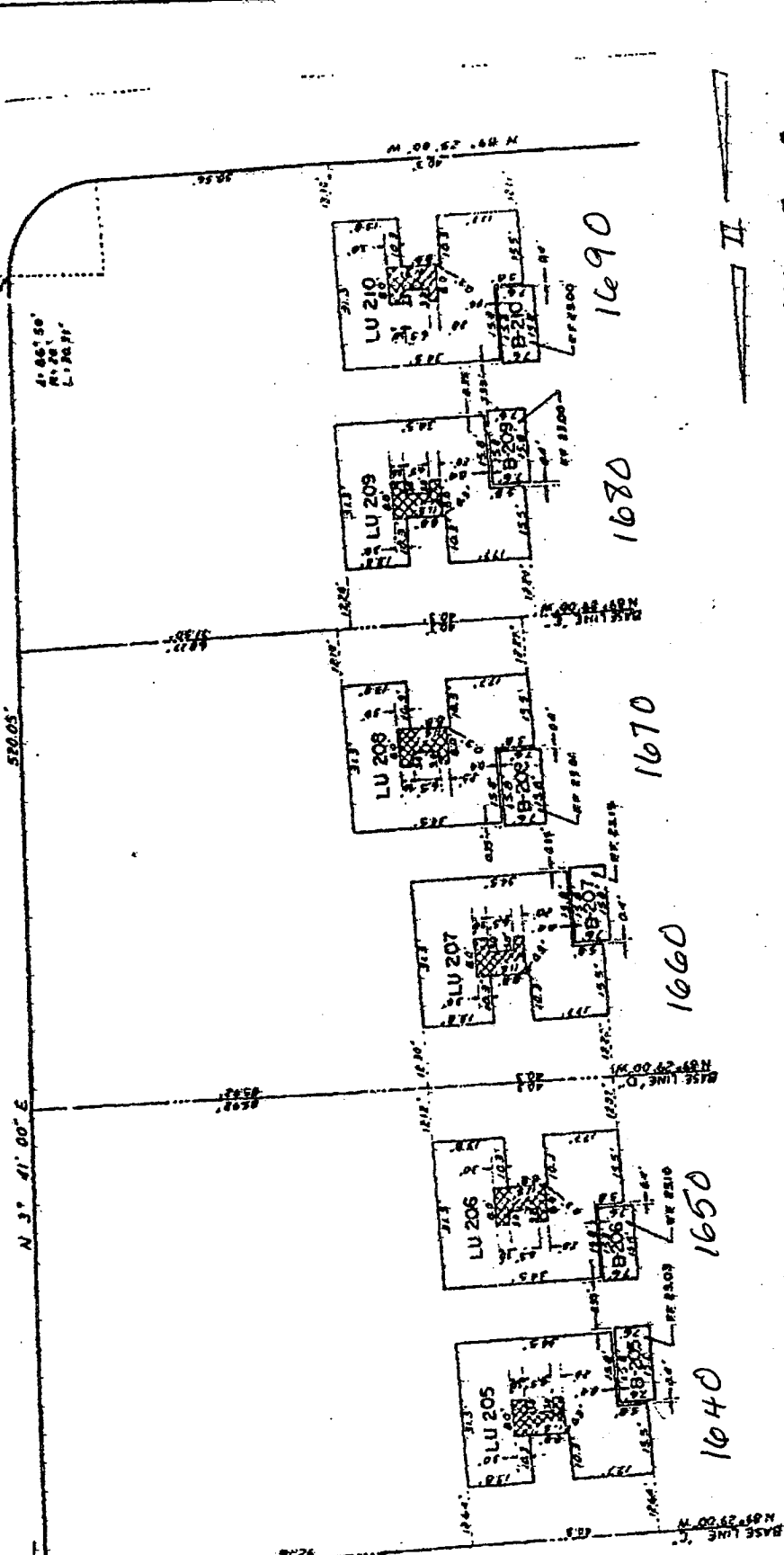
CREATED BY: CROSSMAN & ASSOCIATES
DATE: 05/15/97

07547

BOCA RIO BEACH CONDOMINIUM

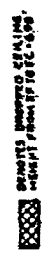
STREET

FIRST



SECOND FLOOR PLAN

CROSSMAN & ASSOCIATES
 1501 CALIFORNIA BLVD. SUITE 400
 SAN DIEGO, CALIFORNIA 92108
 PHONE: 714-298-7000
 FAX: 714-298-7001



DATE: 05/23/00
 TIME: 09:04A

SEE SHEET 6

NO 07547